

**CONSUMER PRICE INDEX NUMBERS FOR  
MIDDLE CLASS EMPLOYEES OF AGARTALA  
FOR THE MONTH OF NOVEMBER, 2010  
(BASE: 1961 = 100)**

---

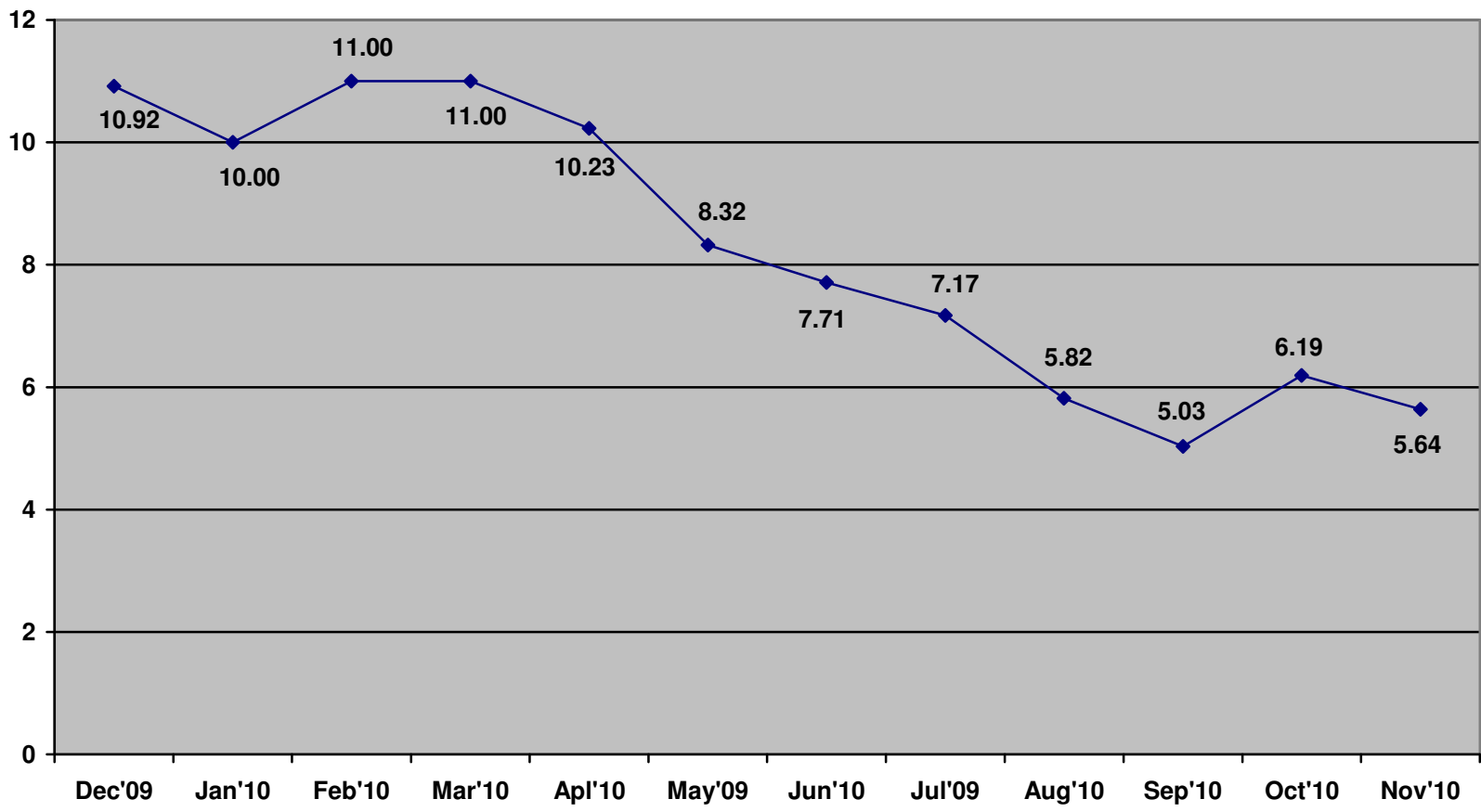
This Consumer Price Index Numbers is designed to measure changes over a period of time in the level of retail prices of selected goods & services on which middle class employees spend their incomes. In practice only a fixed basket of goods & services generally derived by conducting a family budget inquiry among the population group concerned is priced over time and its cost at different periods is compared to its cost in base period.

The Consumer Price Index Numbers for Middle Class Employees of Agartala is calculated on the basis of the price collected from Maharajganj & Battala markets on 160 specified commodities of the selected basket with the Base: 1961=100.

In November, 2010 the Consumer Price Index Numbers for Middle Class Employees stood at 3463, which was 3446 in the previous month of October,2010. Inflation based on CPI Middle Class Employees was 5.64 % in November, 2010 on year-on-basis.

<i>MONTH / YEAR</i>	<i>FOOD BEVERAGE &amp; TOBACCO</i>	<i>FUEL &amp; LIGHTING</i>	<i>HOUSING</i>	<i>CLOTHING &amp; FOOTWEAR</i>	<i>MISCELLA NEOUS</i>	<i>GENERAL INDEX</i>
<i>1</i>	<i>2</i>	<i>3</i>	<i>4</i>	<i>5</i>	<i>6</i>	<i>7</i>
December'09	4025	1850	3509	2390	2485	3302
January'10	4021	1841	3556	2385	2496	3307
February'10	4013	1579	3556	2382	2507	3314
March'10	4038	1987	3556	2382	2507	3326
April'10	4009	2055	3556	2391	2559	3330
May, 10	4037	2129	3556	2379	2502	3333
June'10	4077	2121	3556	2379	2501	3351
July'10	4080	2356	3619	2380	2512	3377
August'10	3994	2491	3619	2380	2659	3380
September'10	3710	2423	3619	2141	3310	3382
October'10	3820	2423	3619	2169	3346	3446
November'10	3855	2423	3619	2169	3346	3463
November'09	3984	1763	3509	2398	2484	3278

**CPI NUMBER OF MIDDLE CLASS EMPLOYEES OF AGARTALA (BASE: 1961=100)  
OVER CORRESPONDENCE PERIOD OF LAST YEAR**



**CONSUMER PRICE INDEX NUMBERS FOR  
MIDDLE CLASS EMPLOYEES OF AGARTALA  
FOR THE MONTH OF DECEMBER, 2010  
(BASE: 1961 = 100)**

---

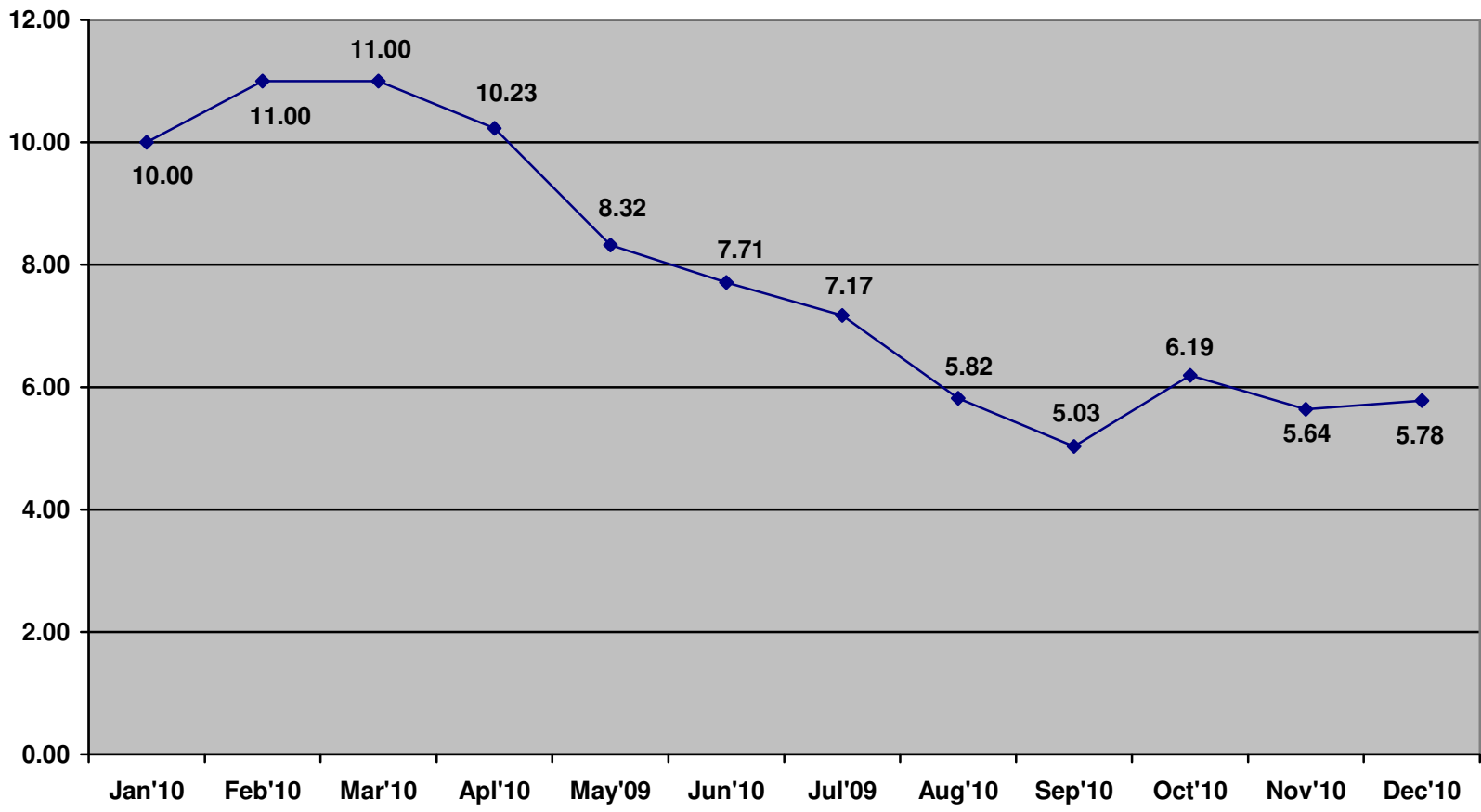
This Consumer Price Index Numbers is designed to measure changes over a period of time in the level of retail prices of selected goods & services on which middle class employees spend their incomes. In practice only a fixed basket of goods & services generally derived by conducting a family budget inquiry among the population group concerned is priced over time and its cost at different periods is compared to its cost in base period.

The Consumer Price Index Numbers for Middle Class Employees of Agartala is calculated on the basis of the price collected from Maharajganj & Battala markets on 160 specified commodities of the selected basket with the Base: 1961=100.

In December, 2010 the Consumer Price Index Numbers for Middle Class Employees stood at 3493, which was 3463 in the previous month of November,2010. Inflation based on CPI Middle Class Employees was 5.78% in December, 2010 on year-on-basis.

<i>MONTH / YEAR</i>	<i>FOOD BEVERAGE &amp; TOBACCO</i>	<i>FUEL &amp; LIGHTING</i>	<i>HOUSING</i>	<i>CLOTHING &amp; FOOTWEAR</i>	<i>MISCELLA NEOUS</i>	<i>GENERAL INDEX</i>
<i>1</i>	<i>2</i>	<i>3</i>	<i>4</i>	<i>5</i>	<i>6</i>	<i>7</i>
January'10	4021	1841	3556	2385	2496	3307
February'10	4013	1579	3556	2382	2507	3314
March'10	4038	1987	3556	2382	2507	3326
April'10	4009	2055	3556	2391	2559	3330
May, 10	4037	2129	3556	2379	2502	3333
June'10	4077	2121	3556	2379	2501	3351
July'10	4080	2356	3619	2380	2512	3377
August'10	3994	2491	3619	2380	2659	3380
September'10	3710	2423	3619	2141	3310	3382
October'10	3820	2423	3619	2169	3346	3446
November'10	3855	2423	3619	2169	3346	3463
December'10	3915	2440	3619	2169	3346	3493
December'09	4025	1850	3509	2390	2485	3302

**CPI NUMBER OF MIDDLE CLASS EMPLOYEES OF AGARTALA (BASE: 1961=100)  
OVER CORRESPONDENCE PERIOD OF LAST YEAR**



**CONSUMER PRICE INDEX NUMBERS FOR  
MIDDLE CLASS EMPLOYEES OF AGARTALA  
FOR THE MONTH OF JANUARY, 2011  
(BASE: 1961 = 100)**

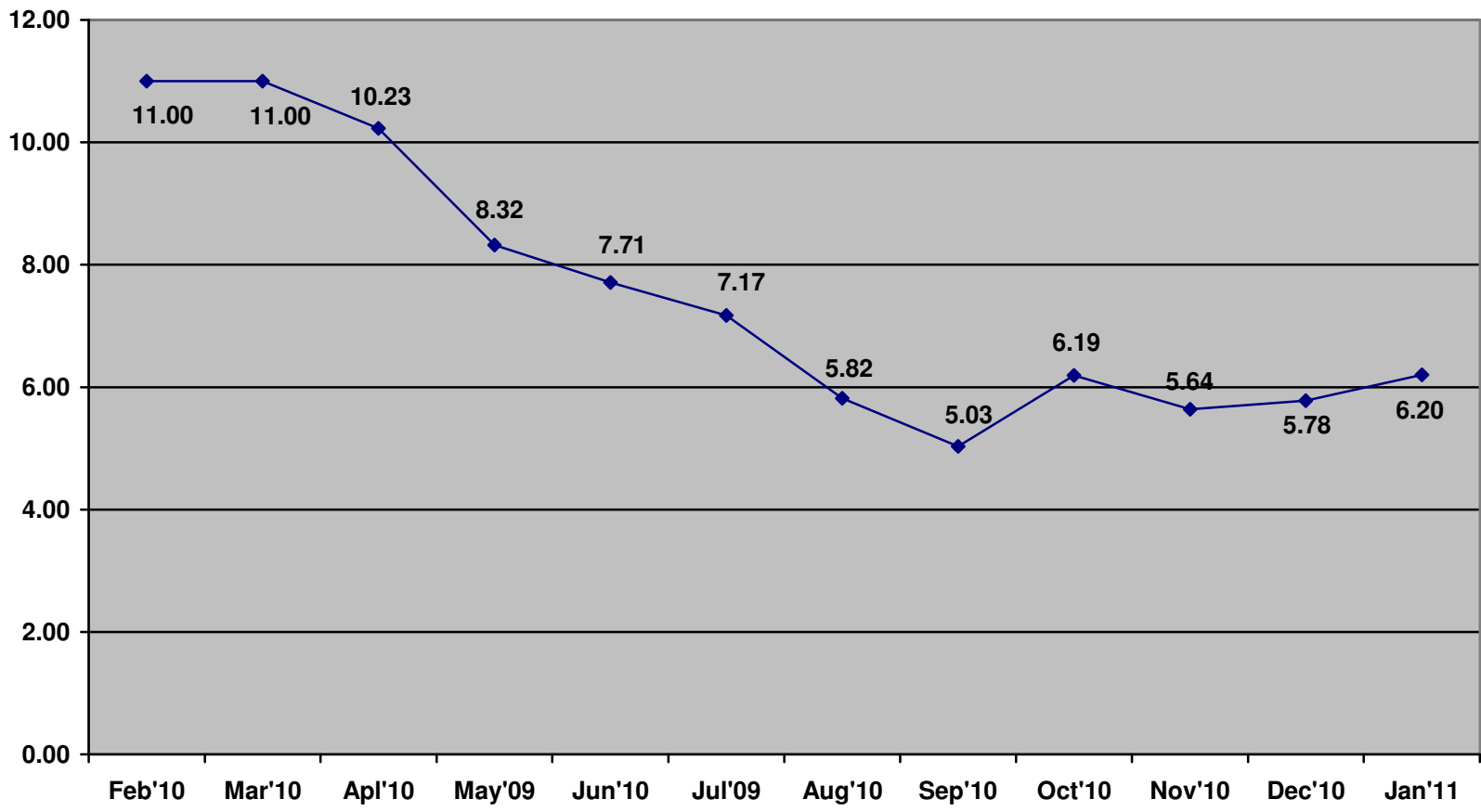
This Consumer Price Index Numbers is designed to measure changes over a period of time in the level of retail prices of selected goods & services on which middle class employees spend their incomes. In practice only a fixed basket of goods & services generally derived by conducting a family budget inquiry among the population group concerned is priced over time and its cost at different periods is compared to its cost in base period.

The Consumer Price Index Numbers for Middle Class Employees of Agartala is calculated on the basis of the price collected from Maharajganj & Battala markets on 160 specified commodities of the selected basket with the Base: 1961=100.

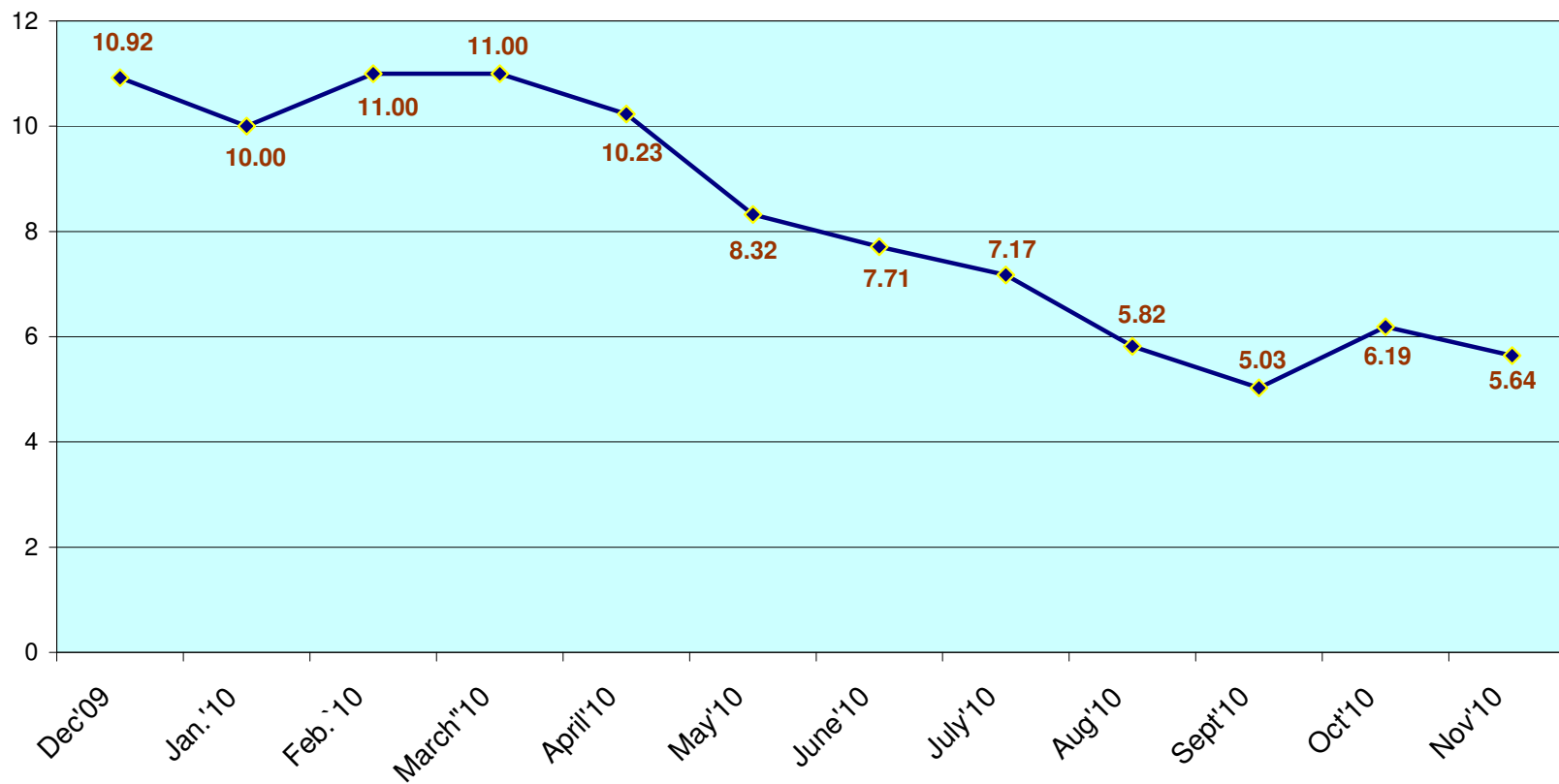
In January,2011 the Consumer Price Index Numbers for Middle Class Employees stood at 3512, which was 3493 in the previous month of December,2010. Inflation based on CPI Middle Class Employees was 6.20% in January,2011 on year-on-basis.

<i>MONTH / YEAR</i>	<i>FOOD BEVERAGE &amp; TOBACCO</i>	<i>FUEL &amp; LIGHTING</i>	<i>HOUSING</i>	<i>CLOTHING &amp; FOOTWEAR</i>	<i>MISCELLA NEOUS</i>	<i>GENERAL INDEX</i>
<i>1</i>	<i>2</i>	<i>3</i>	<i>4</i>	<i>5</i>	<i>6</i>	<i>7</i>
February'10	4013	1579	3556	2382	2507	3314
March'10	4038	1987	3556	2382	2507	3326
April'10	4009	2055	3556	2391	2559	3330
May, 10	4037	2129	3556	2379	2502	3333
June'10	4077	2121	3556	2379	2501	3351
July'10	4080	2356	3619	2380	2512	3377
August'10	3994	2491	3619	2380	2659	3380
September'10	3710	2423	3619	2141	3310	3382
October'10	3820	2423	3619	2169	3346	3446
November'10	3855	2423	3619	2169	3346	3463
December'10	3915	2440	3619	2169	3346	3493
January'11	3944	2440	3659	2170	3346	3512
January'10	4021	1841	3556	2385	2496	3307

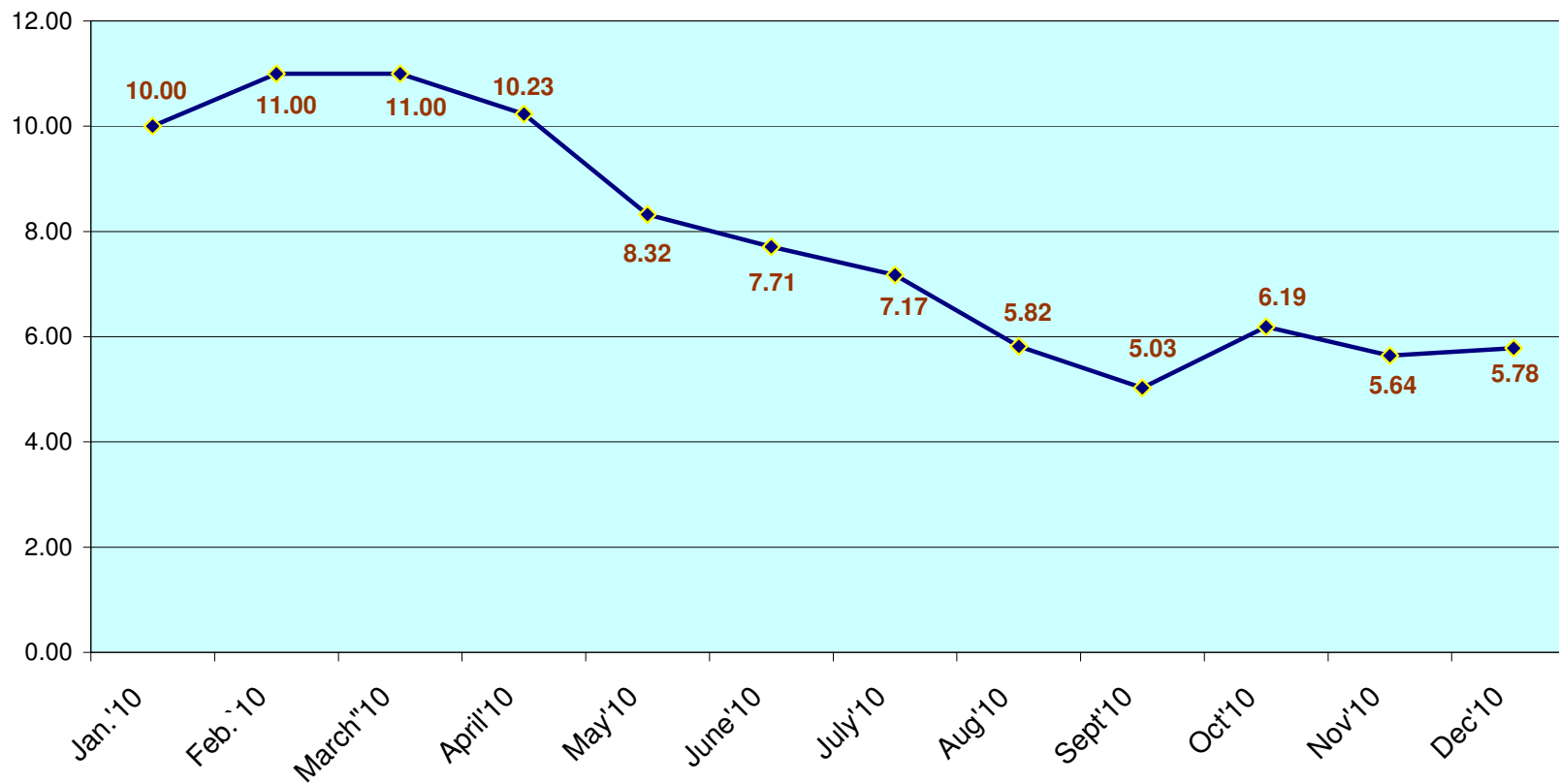
**CPI NUMBER OF MIDDLE CLASS EMPLOYEES OF AGARTALA (BASE: 1961=100)  
OVER CORRESPONDENCE PERIOD OF LAST YEAR**



**CPI NUMBER OF MIDDLE CLASS EMPLOYEES OF AGARTALA (BASE :1961=100)  
OVER CORRESPONDENCE PERIOD OF LAST YEAR**



**CPI NUMBER OF MIDDLE CLASS EMPLOYEES OF AGARTALA (BASE :1961=100)  
OVER CORRESPONDENCE PERIOD OF LAST YEAR**



**CPI NUMBER OF MIDDLE CLASS EMPLOYEES OF AGARTALA (BASE :1961=100)  
OVER CORRESPONDENCE PERIOD OF LAST YEAR**

